



Verification Report

Applicant : XPLORA Technologies AS
Address : Nedre Slottsgate 8, 0157 Oslo Norway

Report on the submitted samples said to be:

Sample Name(s) : Kids Smartwatch
Trade Mark : N/A
Part No. : X6, X6E, X6Play, X6Play eSIM
Sample Received Date : July 30, 2022
 August 05, 2022
 August 06, 2022
 July 30, 2022 ~ August 06, 2022
Testing Period : August 05, 2022 ~ August 06, 2022
 August 06, 2022 ~ August 06, 2022
Date of Report : August 06, 2022
Testing Location : F&G, 23/F, Technology Building, Quanzhi Science and Technology
 Innovation Park, Industrial Building, Maozhoushan Industrial Park,
 Houting, Shajing Street, Bao'an District, Shenzhen, Guangdong, China
Results : Please refer to next page(s).

TEST REQUEST	CONCLUSION
As specified by client, based on the performed tests on submitted sample, the result of Lead(Pb), Cadmium(Cd), Mercury(Hg), Hexavalent Chromium(Cr(VI)), PBBs, PBDEs, Dibutyl Phthalate(DBP), Butylbenzyl Phthalate(BBP), Di-2-ethylhexyl Phthalate(DEHP) and Diisobutyl phthalate(DIBP) content comply with the limits set by RoHS Directive 2011/65/EU with amendment (EU) 2015/863.	PASS

Signed for and on behalf of LCS

Young/Laboratory Manager



**Results:****A. EU RoHS Directive 2011/65/EU and its amendment directives**

Test method: With reference to IEC 62321-1:2013&IEC 62321-2:2021&IEC 62321-3-1:2013, Screening by X-ray Fluorescence Spectroscopy (XRF)

Sample No.	Sample Description	Results						Date of sample submission/ Resubmission
		Cd	Pb	Hg	Cr [▼]	Br [▼]		
						PBBs	PBDEs	
1	Black glass sheet	BL	BL	BL	BL	BL	BL	2022-07-30
2	White plastic shell	BL	BL	BL	BL	BL	BL	2022-07-30
3	Silver metal needle	OL	OL	BL	X	/	/	2022-07-30
4	Black foam glue	BL	BL	BL	BL	BL	BL	2022-07-30
5	Silver magnet	OL	OL	BL	X	/	/	2022-07-30
6	Silver metal sheet	OL	OL	BL	X	/	/	2022-07-30
7	Silver magnet	OL	OL	BL	X	/	/	2022-07-30
8	Silver plastic sheet	BL	BL	BL	BL	BL	BL	2022-07-30
9	Black plastic sheet	BL	BL	BL	BL	BL	BL	2022-07-30
10	Red wire	OL	X	BL	BL	/	/	2022-07-30
11	Blue plastic sheet	BL	BL	BL	BL	BL	BL	2022-07-30
12	Black plastic pad	BL	BL	BL	BL	BL	BL	2022-07-30
13	Red rubber ring	BL	BL	BL	BL	BL	BL	2022-07-30
14	Silver metal sheet	BL	BL	BL	X	/	/	2022-07-30
15	Black plastic sheet	BL	BL	BL	BL	BL	BL	2022-07-30
16	Transparent plastic sheet	BL	BL	BL	BL	BL	BL	2022-07-30
17	White plastic sheet	BL	BL	BL	BL	BL	BL	2022-07-30
18	Silver plastic sheet	BL	BL	BL	BL	BL	BL	2022-07-30
19	Silver metal sheet	BL	BL	BL	X	/	/	2022-07-30
20	Yellow flat cable	BL	BL	BL	BL	BL	BL	2022-07-30
21	Gold metal needle	OL	OL	BL	X	/	/	2022-07-30
22	White lamp bead	BL	BL	BL	BL	BL	BL	2022-07-30
23	Silver metal sheet	BL	BL	BL	X	/	/	2022-07-30
24	Black IC	BL	BL	BL	BL	BL	BL	2022-07-30
25	Silver crystal oscillator	BL	BL	BL	BL	/	/	2022-07-30
26	Silver metal sheet	X	BL	BL	BL	/	/	2022-07-30
27	Black foam	BL	BL	BL	BL	BL	BL	2022-07-30
28	Black plastic sheet	BL	BL	BL	BL	BL	BL	2022-07-30
29	Silver metal sheet	BL	BL	BL	BL	/	/	2022-07-30
30	Silver magnet	BL	BL	BL	BL	/	/	2022-08-05





Sample No.	Sample Description	Results						Date of sample submission/ Resubmission
		Cd	Pb	Hg	Cr ^v	Br ^v		
						PBBs	PBDEs	
31	Red wire	BL	BL	BL	BL	/	/	2022-07-30
32	Green PCB board	BL	BL	BL	BL	BL	BL	2022-07-30
33	Gold metal ring	OL	OL	BL	BL	/	/	2022-07-30
34	Silver metal sheet	OL	BL	BL	BL	/	/	2022-07-30
35	Grey tape	BL	BL	BL	BL	BL	BL	2022-07-30
36	Black IC	BL	BL	BL	BL	BL	BL	2022-07-30
37	Black plastic sheet	BL	BL	BL	BL	BL	BL	2022-07-30
38	Brown capacitor	BL	BL	BL	BL	BL	BL	2022-07-30
39	Gold metal sheet	BL	BL	BL	BL	/	/	2022-07-30
40	PCB board	BL	BL	BL	BL	BL	BL	2022-07-30
41	Silver colored metal screw	OL	OL	BL	X	/	/	2022-07-30
42	Black viscose	BL	BL	BL	BL	BL	BL	2022-07-30
43	Silver plastic sheet	BL	BL	BL	BL	BL	BL	2022-07-30
44	Black soft plastic	BL	BL	BL	BL	BL	BL	2022-07-30
45	Silver metal sheet	BL	BL	BL	BL	/	/	2022-07-30
46	White dry glue	BL	BL	BL	BL	BL	BL	2022-07-30
47	White plastic sheet	BL	BL	BL	BL	BL	BL	2022-07-30
48	Silver metal needle	BL	BL	BL	BL	/	/	2022-07-30
49	Black plastic wire sheath	BL	BL	BL	BL	BL	BL	2022-07-30
50	Red plastic thread cover	BL	BL	BL	BL	BL	BL	2022-07-30
51	Black plastic wire cover	BL	BL	BL	BL	BL	BL	2022-07-30
52	Silver wire	BL	BL	BL	BL	/	/	2022-07-30
53	Black plastic shell	BL	BL	BL	BL	BL	BL	2022-07-30
54	Gold metal needle	BL	BL	BL	BL	/	/	2022-08-05
55	Black plastic pad	BL	BL	BL	BL	BL	BL	2022-07-30
56	Silver magnet	OL	X	BL	X	/	/	2022-07-30
57	Ferrous metal screw	BL	BL	BL	BL	/	/	2022-07-30
58	PCB board	BL	BL	BL	BL	X	X	2022-07-30
59	Tin solder	BL	BL	BL	BL	/	/	2022-08-06
60	Black soft plastic frame	BL	BL	BL	BL	BL	BL	2022-07-30
61	Blue soft plastic frame	BL	BL	BL	BL	BL	BL	2022-07-30
62	Green soft plastic frame	BL	BL	BL	BL	BL	BL	2022-07-30





Sample No.	Sample Description	Results						Date of sample submission/ Resubmission
		Cd	Pb	Hg	Cr [▼]	Br [▼]		
						PBBs	PBDEs	
63	Fluorescent green soft plastic frame	BL	BL	BL	BL	BL	BL	2022-07-30
64	Orange red soft plastic frame	BL	BL	BL	BL	BL	BL	2022-07-30
65	White soft plastic frame	BL	BL	BL	BL	BL	BL	2022-07-30
66	Light pink soft plastic frame	BL	BL	BL	BL	BL	BL	2022-07-30
67	Pink soft plastic frame	BL	BL	BL	BL	BL	BL	2022-07-30
68	Purple soft plastic frame	BL	BL	BL	BL	BL	BL	2022-07-30
69	Silver metal buckle	BL	BL	BL	X	/	/	2022-07-30
70	Orange soft plastic rubber ring	BL	BL	BL	BL	BL	BL	2022-07-30
71	Black soft plastic strap	BL	BL	BL	BL	BL	BL	2022-07-30
72	Pink soft plastic strap	BL	BL	BL	BL	BL	BL	2022-07-30
73	Light pink soft plastic apron	BL	BL	BL	BL	BL	BL	2022-07-30
74	Pink plastic buckle	BL	BL	BL	BL	BL	BL	2022-07-30
75	Dark blue soft plastic strap	BL	BL	BL	BL	BL	BL	2022-07-30
76	Blue soft plastic rubber ring	BL	BL	BL	BL	BL	BL	2022-07-30
77	Dark blue plastic buckle	BL	BL	BL	BL	BL	BL	2022-07-30
78	Blue plastic buckle	BL	BL	BL	BL	BL	BL	2022-07-30
79	Plum red soft plastic strap	BL	BL	BL	BL	BL	BL	2022-07-30
80	Plum red plastic buckle	BL	BL	BL	BL	BL	BL	2022-07-30
81	Fluorescent green soft plastic strap	BL	BL	BL	BL	BL	BL	2022-07-30
82	Fluorescent green plastic buckle	BL	BL	BL	BL	BL	BL	2022-07-30
83	Dark green soft plastic strap	BL	BL	BL	BL	BL	BL	2022-07-30
84	Dark green plastic buckle	BL	BL	BL	BL	BL	BL	2022-07-30
85	Silver metal needle	BL	BL	BL	X	/	/	2022-07-30
86	Silver metal spring	BL	X	BL	X	/	/	2022-07-30
87	Silver metal buckle	OL	X	BL	X	/	/	2022-07-30





Note:

- Results were obtained by XRF for primary screening, and further chemical testing by ICP(for Cd, Pb, Hg), UV-Vis(for Cr(VI)) and GC-MS(for PBBs, PBDEs) are recommended to be performed, if the concentration exceeds the below warning value according to IEC 62321-3-1:2013(Unit: mg/kg).

Element	Polymers	Metals	Composite material
Cd	$BL \leq (70-3\sigma) < X < (130+3\sigma) \leq OL$	$BL \leq (70-3\sigma) < X < (130+3\sigma) \leq OL$	$LOD < X < (150+3\sigma) \leq OL$
Pb	$BL \leq (700-3\sigma) < X < (1300+3\sigma) \leq OL$	$BL \leq (700-3\sigma) < X < (1300+3\sigma) \leq OL$	$BL \leq (500-3\sigma) < X < (1500+3\sigma) \leq OL$
Hg	$BL \leq (700-3\sigma) < X < (1300+3\sigma) \leq OL$	$BL \leq (700-3\sigma) < X < (1300+3\sigma) \leq OL$	$BL \leq (500-3\sigma) < X < (1500+3\sigma) \leq OL$
Cr	$BL \leq (700-3\sigma) < X$	$BL \leq (700-3\sigma) < X$	$BL \leq (500-3\sigma) < X$
Br	$BL \leq (300-3\sigma) < X$	N/A	$BL \leq (250-3\sigma) < X$

Remark:

- BL= Below Limit
 - OL= Over Limit
 - X= The range of needing to do further testing
 - 3σ= The reproducibility of analytical instruments
 - N/A= Not applicable
 - LOD= Detection limit
- The XRF screening test for RoHS elements – The reading may be different to the actual content in the sample be of non-uniformity composition.
 - The maximum permissible limit is quoted from the document RoHS Directive 2011/65/EU with amendment (EU) 2015/863.
 - ▼=For restricted substances PBBs and PBDEs, the results show the total Br content, the restricted substance was Cr(VI), and the results showed the total Cr content.





RoHS Restricted Substances	Maximum Concentration Value (mg/kg) (by weight in homogenous materials)
Cadmium(Cd)	100
Lead(Pb)	1000
Mercury(Hg)	1000
Hexavalent Chromium(Cr(VI))	1000
Polybrominated biphenyls(PBBs)	1000
Polybrominated diphenylethers(PBDEs)	1000
Dibutyl Phthalate(DBP)	1000
Butylbenzyl Phthalate(BBP)	1000
Di-(2-ethylhexyl) Phthalate(DEHP)	1000
Diisobutyl phthalate(DIBP)	1000

Disclaimers:

This XRF Screening report is for reference purposes only. The applicant shall make its/his/her own judgment as to whether the information provided in this XRF screening report is sufficient for its/his/her purposes. The result shown in this XRF screening report will differ based on various factors, including but not limited to, the sample size, thickness, area, surface flatness, equipment parameters and matrix effect (e.g. plastic, rubber, metal, glass, ceramic etc.). Further wet chemical pre-treatment with relevant chemical equipment analysis are required to obtain quantitative data.



**B. EU RoHS Directive 2011/65/EU with amendment (EU) 2015/863 on Lead(Pb), Cadmium(Cd), Mercury(Hg), Hexavalent Chromium(Cr(VI)), PBBs, PBDEs, DBP, BBP, DEHP & DIBP content****Test method:****Lead(Pb) & Cadmium(Cd) Content:**

With reference to IEC 62321-5:2013, by acid digestion and analysis was performed by inductively coupled plasma atomic emission spectrometer (ICP-OES) or Atomic absorption spectrometer (AAS).

Mercury(Hg) Content:

With reference to IEC 62321-4:2013+AMD1:2017 CSV, by acid digestion and analysis was performed by inductively coupled plasma atomic emission spectrometer (ICP-OES).

Hexavalent Chromium(Cr(VI)) Content:

With reference to IEC 62321-7-1:2015 or IEC 62321-7-2:2017, analysis was performed by UV-visible spectrophotometer (UV-Vis).

PBBs & PBDEs Content:

With reference to IEC 62321-6:2015, by solvent extraction and analysis was performed by gas chromatographic-mass spectrometer (GC-MS).

Phthalates(DBP, BBP, DEHP & DIBP) Content:

With reference to IEC 62321-8:2017, by solvent extraction and analysis was performed by gas chromatographic-mass spectrometer (GC-MS).

1) The test results of Lead(Pb) & Cadmium(Cd)

Tested Items	MDL (mg/kg)	Results (mg/kg)				Limit (mg/kg)
		(3)	(5)	(6)	(7)	
Lead(Pb) Content	5	18	765	37	814	1000

Tested Items	MDL (mg/kg)	Results (mg/kg)				Limit (mg/kg)
		(10)	(21)	(33)	(41)	
Lead(Pb) Content	5	37	425	143	142	1000

Tested Items	MDL (mg/kg)	Results (mg/kg)			Limit (mg/kg)
		(56)	(86)	(87)	
Lead(Pb) Content	5	718	217	12	1000

Tested Items	MDL (mg/kg)	Results (mg/kg)				Limit (mg/kg)
		(3)	(5)	(6)	(7)	
Cadmium(Cd) Content	5	N.D.	N.D.	N.D.	N.D.	100





Tested Items	MDL (mg/kg)	Results (mg/kg)				Limit (mg/kg)
		(10)	(21)	(26)	(33)	
Cadmium(Cd) Content	5	N.D.	26	N.D.	5	100

Tested Items	MDL (mg/kg)	Results (mg/kg)				Limit (mg/kg)
		(34)	(41)	(56)	(87)	
Cadmium(Cd) Content	5	N.D.	N.D.	N.D.	N.D.	100

2) The test results of Hexavalent Chromium(Cr(VI))(for coating on metal)

Tested Items	MDL ($\mu\text{g}/\text{cm}^2$)	Results ($\mu\text{g}/\text{cm}^2$)			Limit ($\mu\text{g}/\text{cm}^2$)
		(3)	(5)	(6)	
Hexavalent Chromium(Cr(VI)) Content★	0.10 (LOQ)	N.D.	N.D.	N.D.	1000

Tested Items	MDL ($\mu\text{g}/\text{cm}^2$)	Results ($\mu\text{g}/\text{cm}^2$)			Limit ($\mu\text{g}/\text{cm}^2$)
		(7)	(14)	(19)	
Hexavalent Chromium(Cr(VI)) Content★	0.10 (LOQ)	N.D.	N.D.	N.D.	1000

Tested Items	MDL ($\mu\text{g}/\text{cm}^2$)	Results ($\mu\text{g}/\text{cm}^2$)			Limit ($\mu\text{g}/\text{cm}^2$)
		(21)	(23)	(41)	
Hexavalent Chromium(Cr(VI)) Content★	0.10 (LOQ)	N.D.	N.D.	N.D.	1000

Tested Items	MDL ($\mu\text{g}/\text{cm}^2$)	Results ($\mu\text{g}/\text{cm}^2$)			Limit ($\mu\text{g}/\text{cm}^2$)
		(56)	(69)	(85)	
Hexavalent Chromium(Cr(VI)) Content★	0.10 (LOQ)	N.D.	N.D.	N.D.	1000

Tested Items	MDL ($\mu\text{g}/\text{cm}^2$)	Results ($\mu\text{g}/\text{cm}^2$)		Limit ($\mu\text{g}/\text{cm}^2$)
		(86)	(87)	
Hexavalent Chromium(Cr(VI)) Content★	0.10 (LOQ)	N.D.	N.D.	1000



**3) The test results of Phthalates(DBP, BBP, DEHP &DIBP)**

Tested Items	MDL (mg/kg)	Results (mg/kg)	Limit (mg/kg)
		1+2+4+8+9+11	
Dibutyl Phthalate(DBP) Content	600	N.D.	1000
Butylbenzyl Phthalate(BBP) Content	600	N.D.	1000
Di-(2-ethylhexyl) Phthalate(DEHP) Content	600	N.D.	1000
Diisobutyl phthalate(DIBP) Content	600	N.D.	1000

Tested Items	MDL (mg/kg)	Results (mg/kg)	Limit (mg/kg)
		12+13+15+16+17+18	
Dibutyl Phthalate(DBP) Content	600	N.D.	1000
Butylbenzyl Phthalate(BBP) Content	600	N.D.	1000
Di-(2-ethylhexyl) Phthalate(DEHP) Content	600	N.D.	1000
Diisobutyl phthalate(DIBP) Content	600	N.D.	1000

Tested Items	MDL (mg/kg)	Results (mg/kg)	Limit (mg/kg)
		20+22+24+27+28+32	
Dibutyl Phthalate(DBP) Content	600	N.D.	1000
Butylbenzyl Phthalate(BBP) Content	600	N.D.	1000
Di-(2-ethylhexyl) Phthalate(DEHP) Content	600	N.D.	1000
Diisobutyl phthalate(DIBP) Content	600	N.D.	1000

Tested Items	MDL (mg/kg)	Results (mg/kg)	Limit (mg/kg)
		35+36+37+38+40+42	
Dibutyl Phthalate(DBP) Content	600	N.D.	1000
Butylbenzyl Phthalate(BBP) Content	600	N.D.	1000
Di-(2-ethylhexyl) Phthalate(DEHP) Content	600	N.D.	1000
Diisobutyl phthalate(DIBP) Content	600	N.D.	1000





Tested Items	MDL (mg/kg)	Results (mg/kg)	Limit (mg/kg)
		43+44+46+47+49+50	
Dibutyl Phthalate(DBP) Content	600	N.D.	1000
Butylbenzyl Phthalate(BBP) Content	600	N.D.	1000
Di-(2-ethylhexyl) Phthalate(DEHP) Content	600	N.D.	1000
Diisobutyl phthalate(DIBP) Content	600	N.D.	1000

Tested Items	MDL (mg/kg)	Results (mg/kg)	Limit (mg/kg)
		51+53+55+58+60+61	
Dibutyl Phthalate(DBP) Content	600	N.D.	1000
Butylbenzyl Phthalate(BBP) Content	600	N.D.	1000
Di-(2-ethylhexyl) Phthalate(DEHP) Content	600	N.D.	1000
Diisobutyl phthalate(DIBP) Content	600	N.D.	1000

Tested Items	MDL (mg/kg)	Results (mg/kg)	Limit (mg/kg)
		62+63+64+65+66+67	
Dibutyl Phthalate(DBP) Content	600	N.D.	1000
Butylbenzyl Phthalate(BBP) Content	600	N.D.	1000
Di-(2-ethylhexyl) Phthalate(DEHP) Content	600	N.D.	1000
Diisobutyl phthalate(DIBP) Content	600	N.D.	1000

Tested Items	MDL (mg/kg)	Results (mg/kg)	Limit (mg/kg)
		68+70+71+72+73+74	
Dibutyl Phthalate(DBP) Content	600	N.D.	1000
Butylbenzyl Phthalate(BBP) Content	600	N.D.	1000
Di-(2-ethylhexyl) Phthalate(DEHP) Content	600	N.D.	1000
Diisobutyl phthalate(DIBP) Content	600	N.D.	1000





Tested Items	MDL (mg/kg)	Results (mg/kg)	Limit (mg/kg)
		75+76+77+78+79+80	
Dibutyl Phthalate(DBP) Content	600	N.D.	1000
Butylbenzyl Phthalate(BBP) Content	600	N.D.	1000
Di-(2-ethylhexyl) Phthalate(DEHP) Content	600	N.D.	1000
Diisobutyl phthalate(DIBP) Content	600	N.D.	1000

Tested Items	MDL (mg/kg)	Results (mg/kg)	Limit (mg/kg)
		81+82+83+84	
Dibutyl Phthalate(DBP) Content	600	N.D.	1000
Butylbenzyl Phthalate(BBP) Content	600	N.D.	1000
Di-(2-ethylhexyl) Phthalate(DEHP) Content	600	N.D.	1000
Diisobutyl phthalate(DIBP) Content	600	N.D.	1000



**4) The test results of PBBs & PBDEs**

Tested Items	MDL (mg/kg)	Results (mg/kg)	Limit (mg/kg)
		(58)	
Polybrominated Biphenyls(PBBs) Content			
Monobromobiphenyl	5	N.D.	/
Dibromobiphenyl	5	N.D.	/
Tribromobiphenyl	5	N.D.	/
Tetrabromobiphenyl	5	N.D.	/
Pentabromobiphenyl	5	N.D.	/
Hexabromobiphenyl	5	N.D.	/
Heptabromobiphenyl	5	N.D.	/
Octabromobiphenyl	5	N.D.	/
Nonabromodiphenyl	5	N.D.	/
Decabromodiphenyl	5	N.D.	/
Total content	/	N.D.	1000
Polybrominated Diphenylethers(PBDEs) Content			
Monobromodiphenyl ether	5	N.D.	/
Dibromodiphenyl ether	5	N.D.	/
Tribromodiphenyl ether	5	N.D.	/
Tetrabromodiphenyl ether	5	N.D.	/
Pentabromodiphenyl ether	5	N.D.	/
Hexabromodiphenyl ether	5	N.D.	/
Heptabromodiphenyl ether	5	N.D.	/
Octabromodiphenyl ether	5	N.D.	/
Nonabromodiphenyl ether	5	N.D.	/
Decabromodiphenyl ether	5	N.D.	/
Total content	/	N.D.	1000



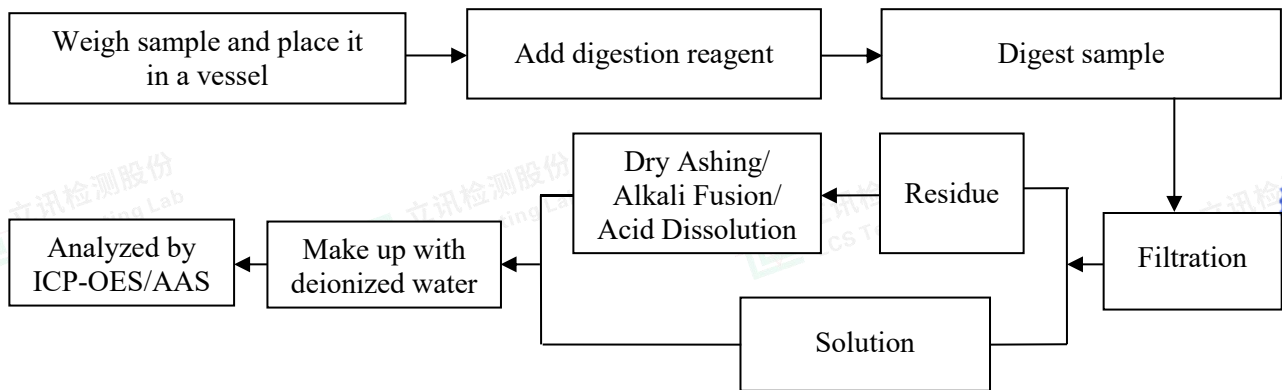


Note:

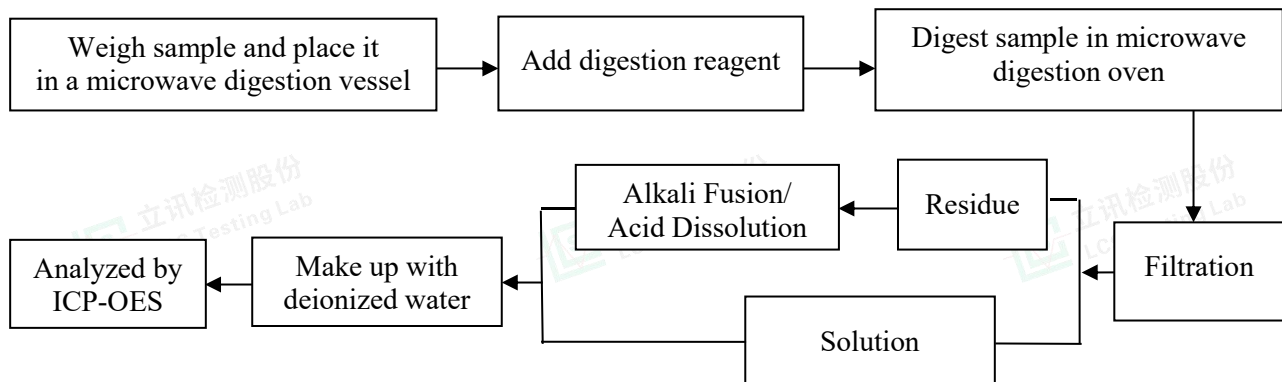
- MDL = Method Detection Limit
- N.D. = Not Detected (<MDL or LOQ)
- mg/kg = milligrams per kilogram
- LOQ = Limit Of Quantification, The LOQ of Hexavalent chromium is 0.10 µg/cm²
- ★ = a. The sample is positive for Cr(VI) if the Cr(VI) concentration is greater than 0.13µg/cm². The sample coating is considered to contain Cr(VI).
b. The sample is negative for Cr(VI) if Cr(VI) is N.D.(concentration less than 0.10µg/cm²). The sample coating is considered a non- Cr(VI) based coating.
c. The result between 0.10µg/cm² and 0.13µg/cm² is considered to be inconclusive, unavoidable coating variations may influence the determination.
- Information on storage conditions and production date of the tested samples is unavailable and thus Cr(VI) results represent status of the sample at the time of testing.
- According to customer's requirement, only the appointed materials have been tested.

Test Process

1. Lead(Pb) & Cadmium(Cd): IEC 62321-5:2013



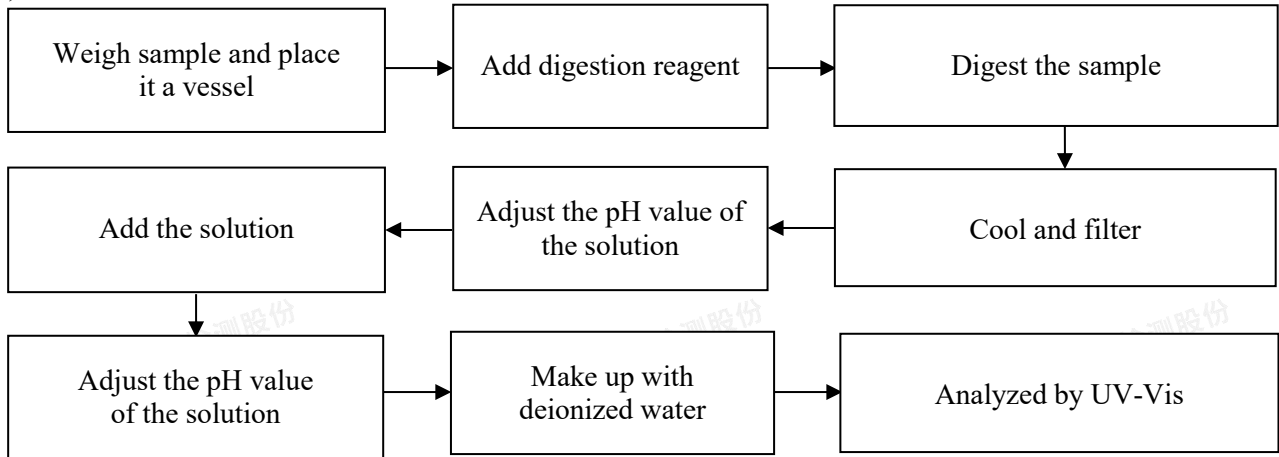
2. Mercury(Hg): IEC 62321-4:2013+AMD1:2017 CSV



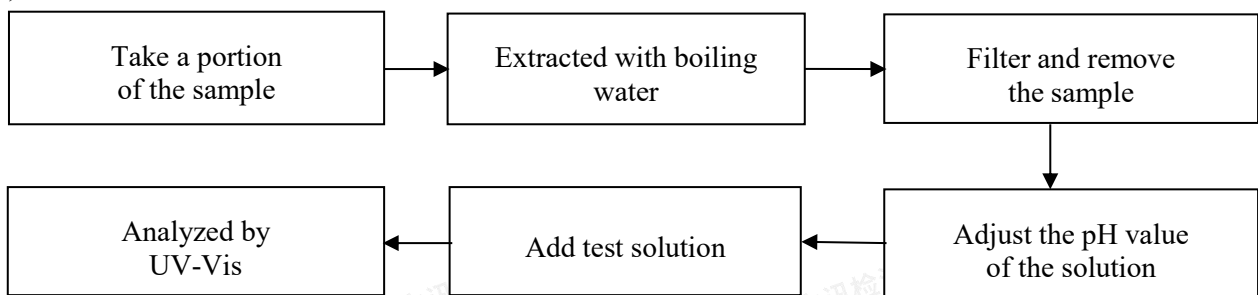


3. Hexavalent Chromium(Cr(VI))

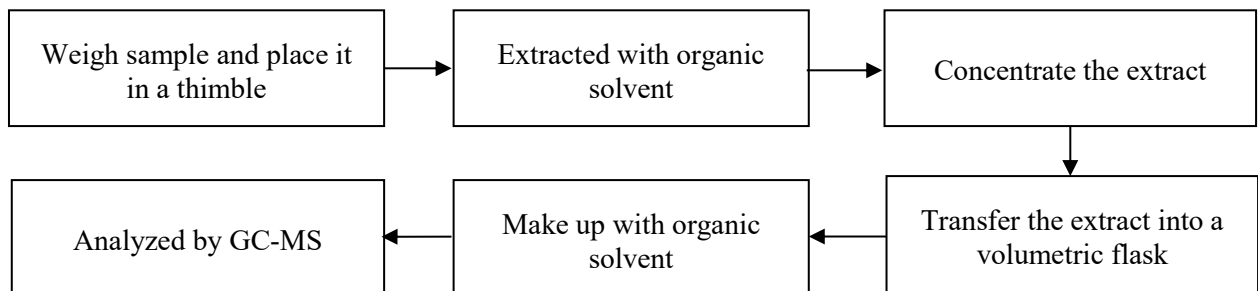
1) IEC 62321-7-2:2017



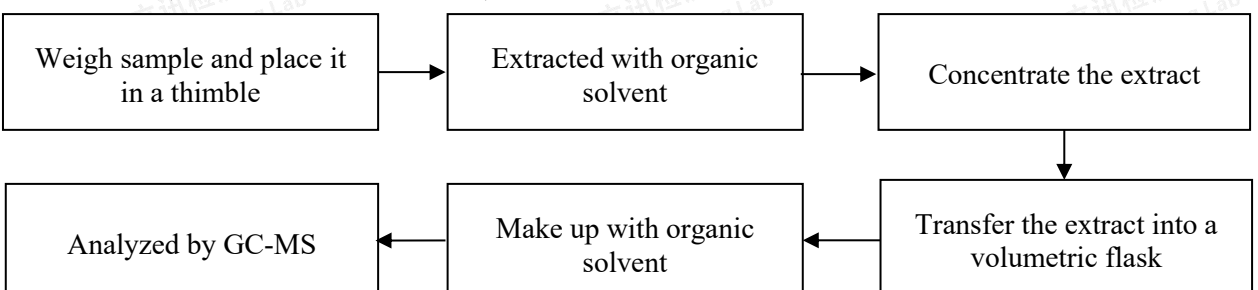
2) IEC 62321-7-1:2015



4. Polybrominated Biphenyls(PBBs) & Polybrominated Diphenyl Ethers(PBDEs) : IEC 62321-6:2015



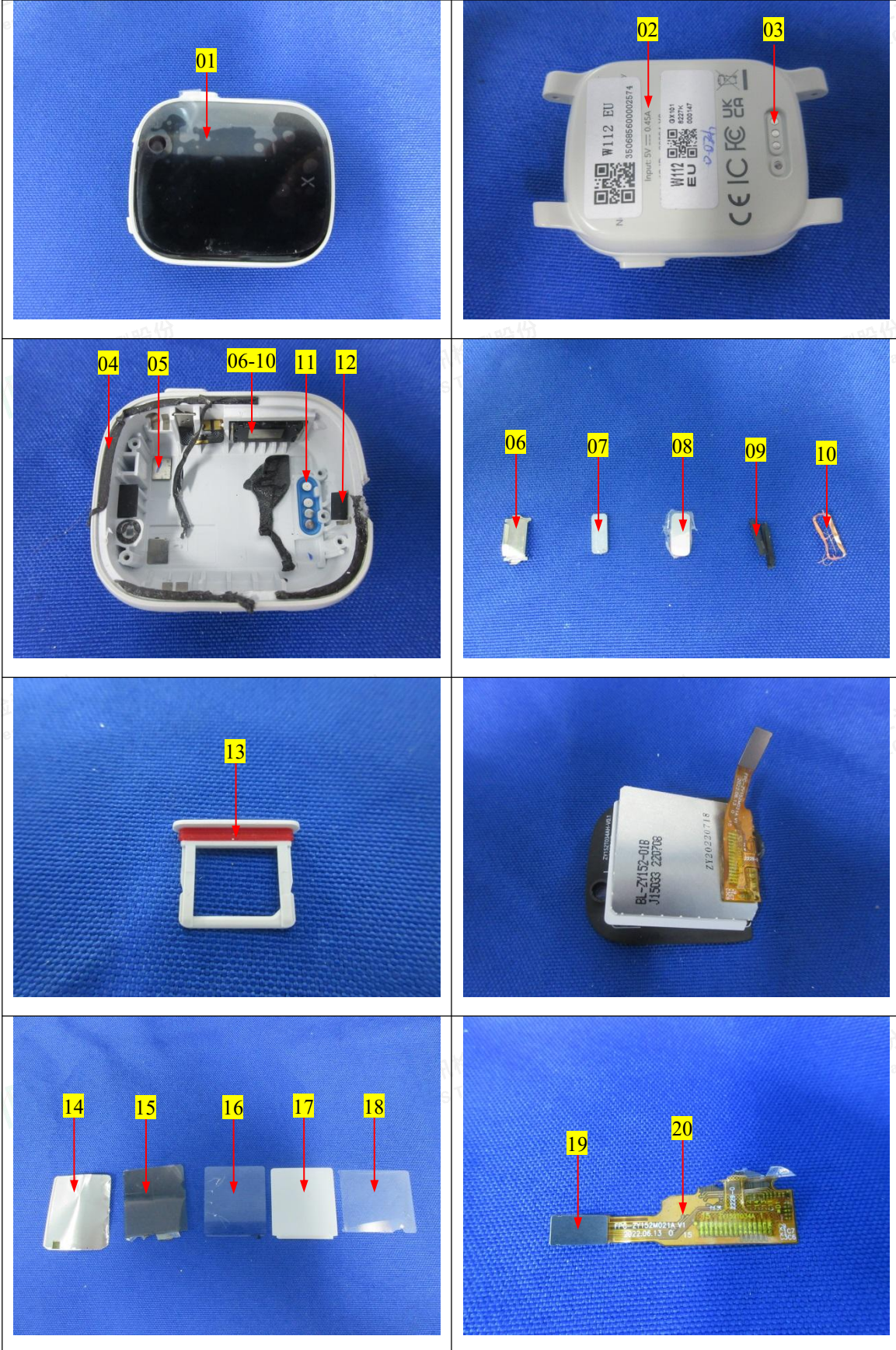
5. Phthalates(DBP, BBP, DEHP & DIBP) : IEC 62321-8:2017

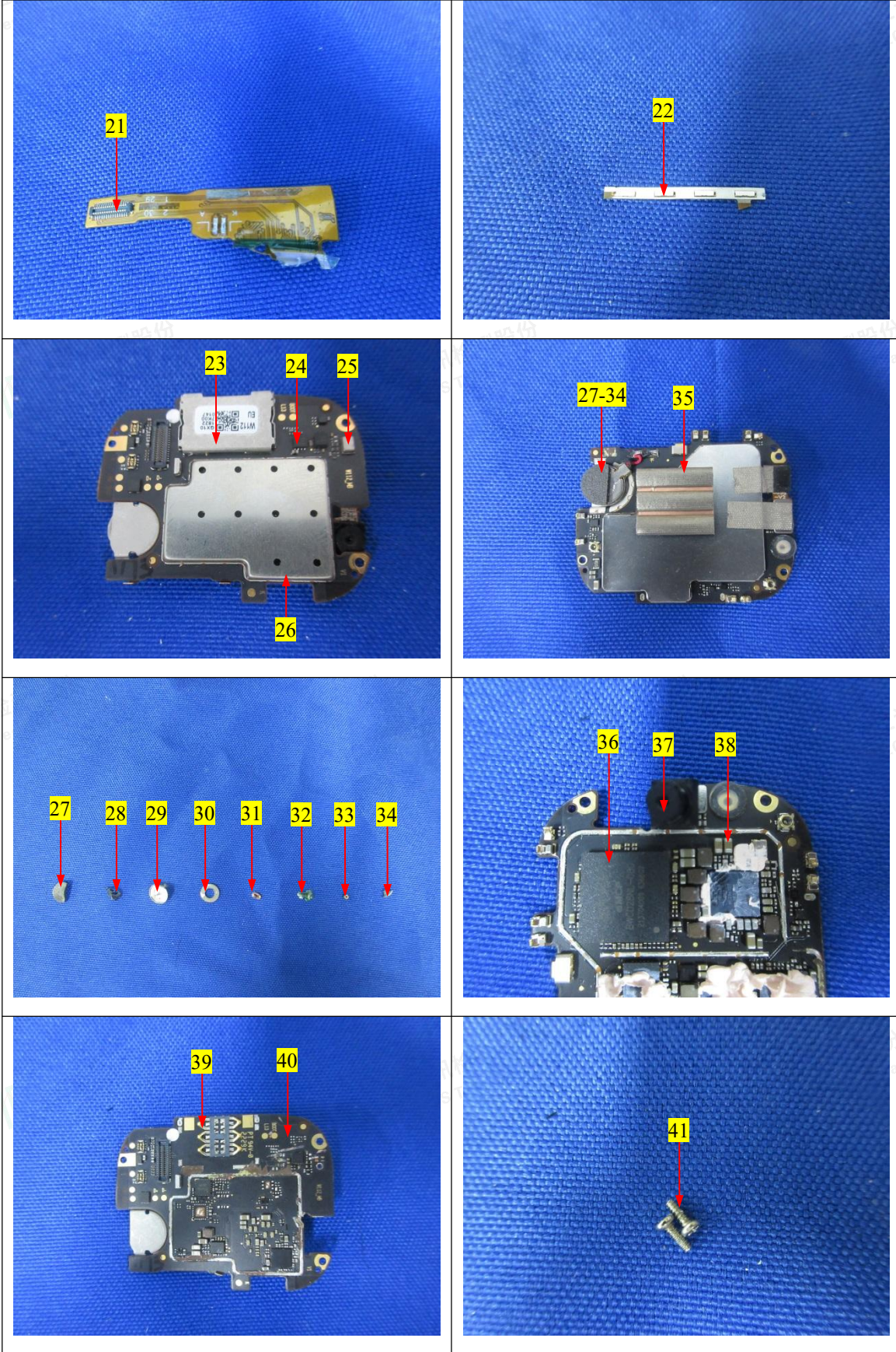


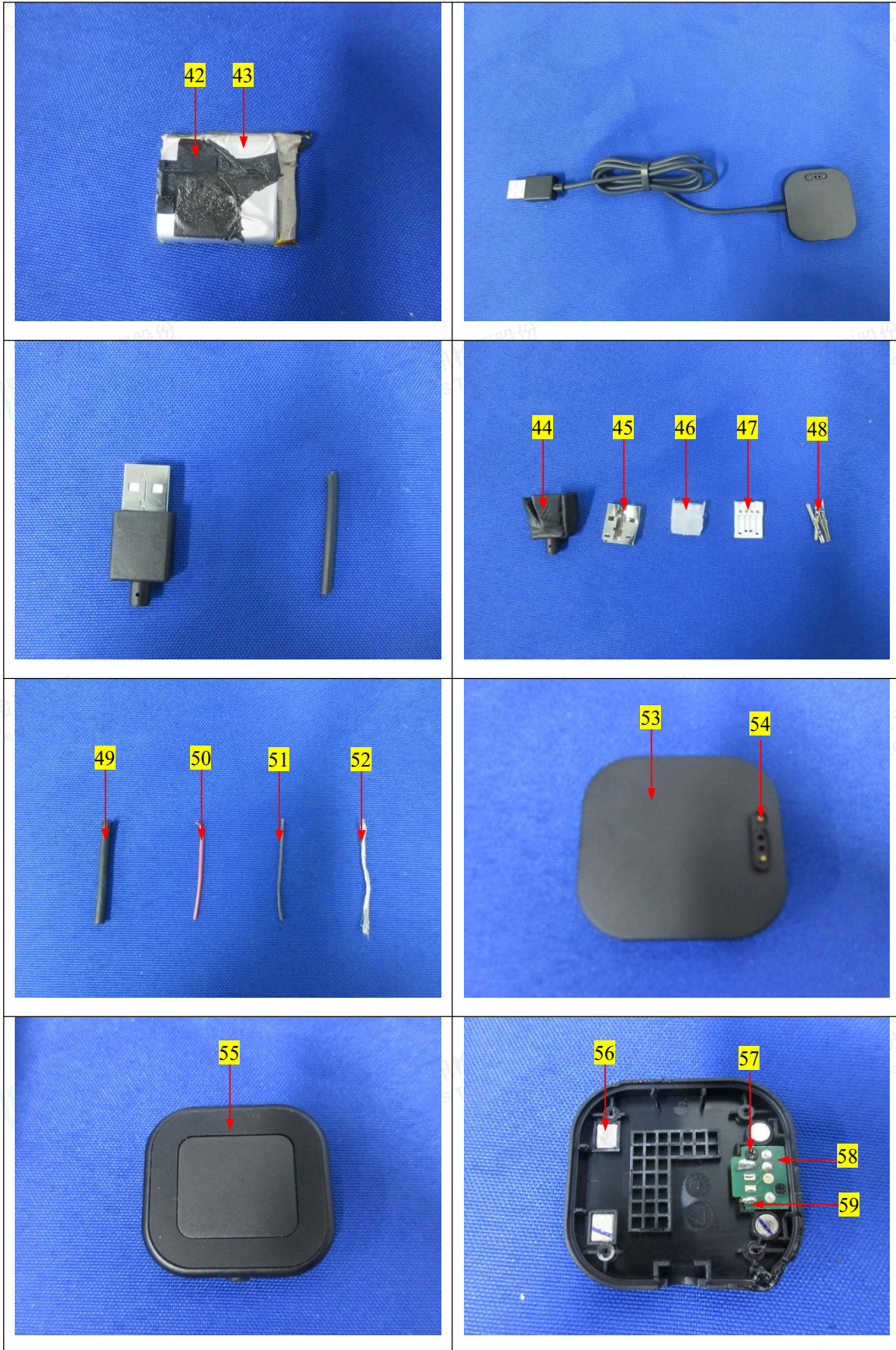


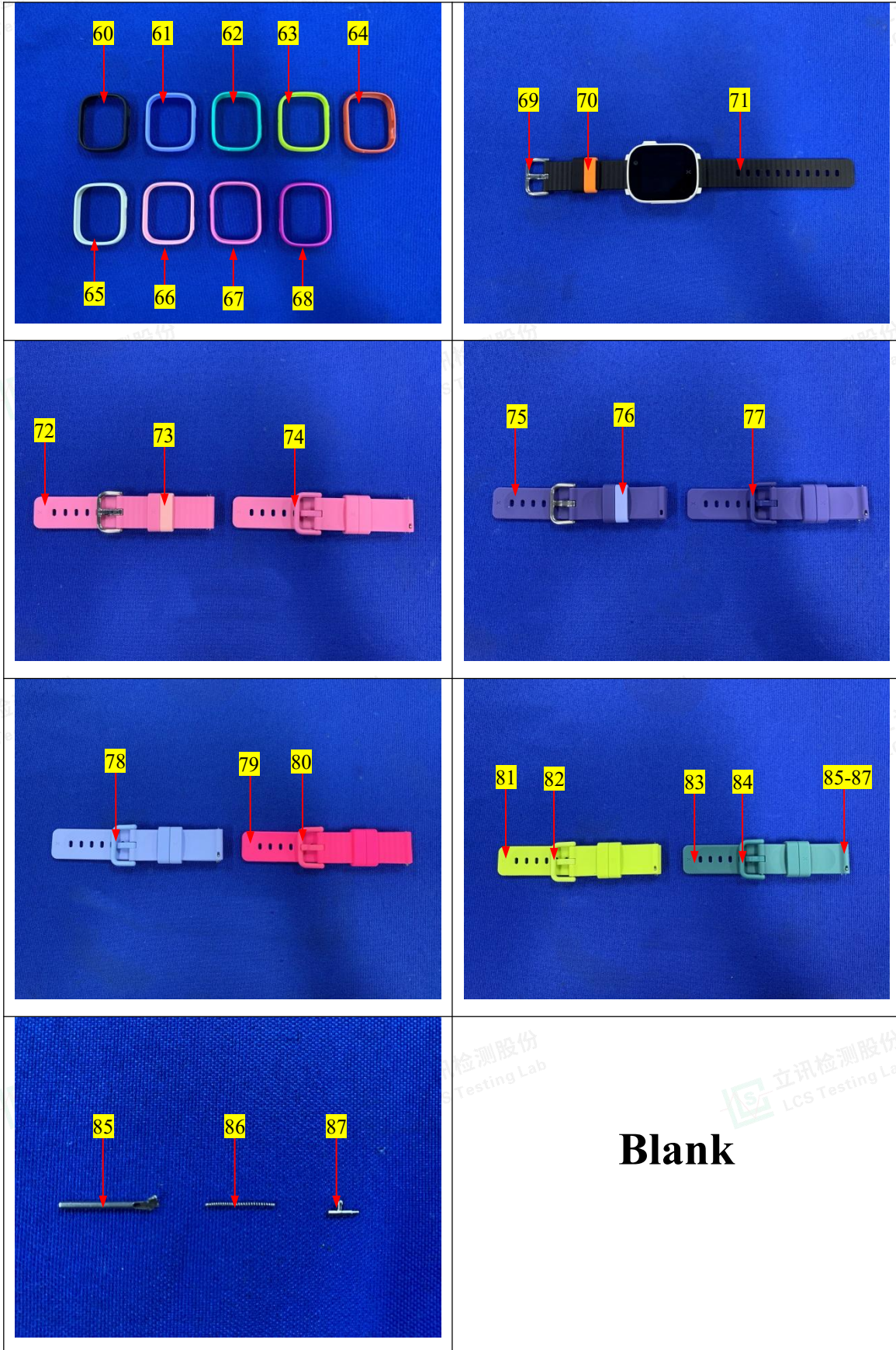
The photo(s) of the sample













Statement:

1. The test report is invalid without the signature of the approver and the special seal for the company's report;
2. The company name, address and sample information shown on the report were provided by the applicant who should be responsible for the authenticity which are not verified by LCS;
3. The test results in this report are only responsible for the tested samples;
4. Without written approval of LCS, this report can't be reproduced except in full;
5. In case of any discrepancy between the corresponding Chinese and English contents in the test report, the English version shall prevail.

*** End of Report ***

